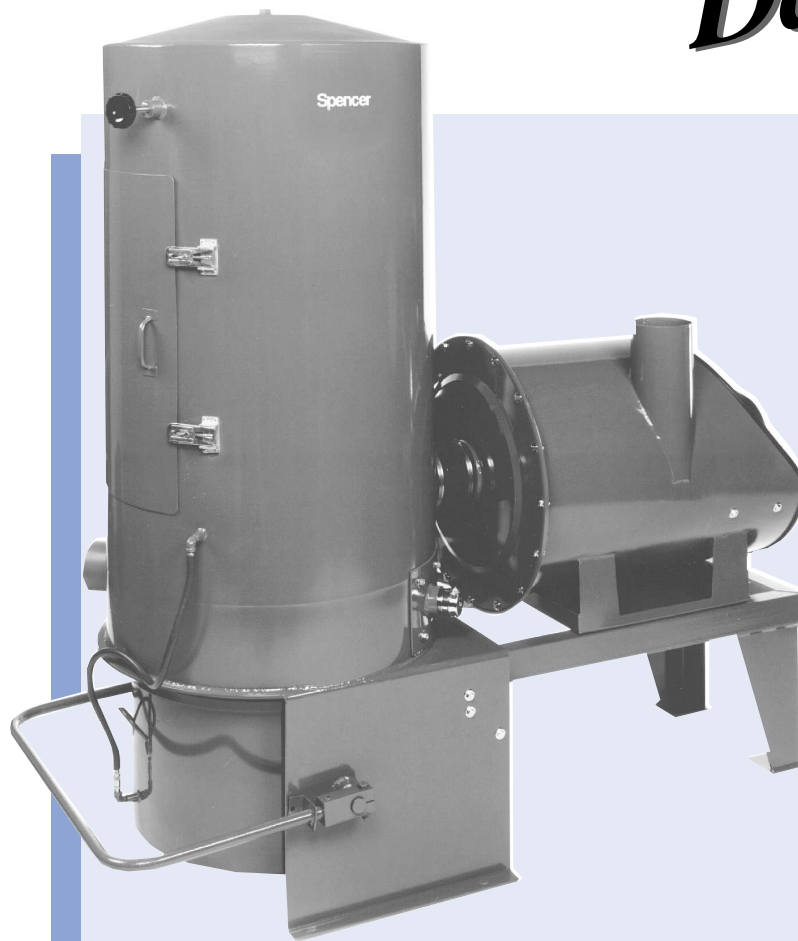


Spencer® *Technical Data Sheet*



Industravac® Series B, Stationary and Portable Models

Vacuum Producer

- Multi-stage centrifugal
- Standard overhung direct drive
- 6 in. tubing upblast exhaust (diffuser on portable)
- Average sound pressure level: 79 dBA at 3 feet
- Factory performance tested

Motor

- 10, 15 or 20 HP, 3500 rpm
- 208/230/460 or 575 volt, 3 phase, 60 Hz
- Open drip-proof
- Bearing life: 100,000 hours (L-10)

Separator

- Tubular bag separator, shaker type: 30 in. dia.
- Multiple inverted filter bags: Quantity 19
- Filter bag area: 75 sq. ft
- Filter bag material: cotton sateen (Part No. BVA-90061)
- Filter bag diameter: 5 in. (Cat. No. 5445-N)
- External manual bag shaker
- Large, hinged inspection door
- Removable dirt can, cam actuated, capacity: 4¹/₃ cu. ft.
- Average filtration efficiency: 99.9% at 3 microns
- Axial inlets with target plate:
 - Stationary: ■ primary inlet– 5 in. tubing with sleeve
 - secondary inlet– inlet valve (Part No. VLV-90083) for 1¹/₂ in. diameter hose
 - Portable: ■ two inlet valves (Part No. VLV-90083) for 1¹/₂ in. diameter hose

Base

- Stationary ■ common frame with mounting pads
- Portable ■ large molded rubber tires
- NEMA 1 across-the-line starter
- 50 ft. electrical cable

Available Options

- TEFC and explosion-proof motors
- Special motor voltages
- NEMA 4, 7, and 9 starter enclosures
- Grounded filter bags
- Cotton twill (Part No. BVA-90062) or other filter bag materials
- Dirt can liners (with equalizing line)
- Discharge silencer
- Discharge throttling valve
- Inlet valve (Part No. VLV-90100) for 2 in. diameter hose
- 4 in. threaded inlet to accommodate larger than 2 in. valve
- Rear primary inlet position

Performance Data

Volume (SCFM)	Vacuum (In. Hg)	Motor HP	Catalog Number		Shipping Weight (lb.)
			Stationary	Portable	
300	8.0	15	SB-715B	PB-715B	1135
400	6.9	15	SB-615B	PB-615B	1125
420	4.9	10	SB-410B	PB-410B	1050
430	8.4	20	SB-720B	PB-720B	1160
520	5.7	15	SB-515B	PB-515B	1115
600	4.4	15	SB-415B	PB-415B	1105
610	6.1	20	SB-620B	PB-620B	1150

Performance based on 70°F inlet temperature at sea level.

Materials of Construction

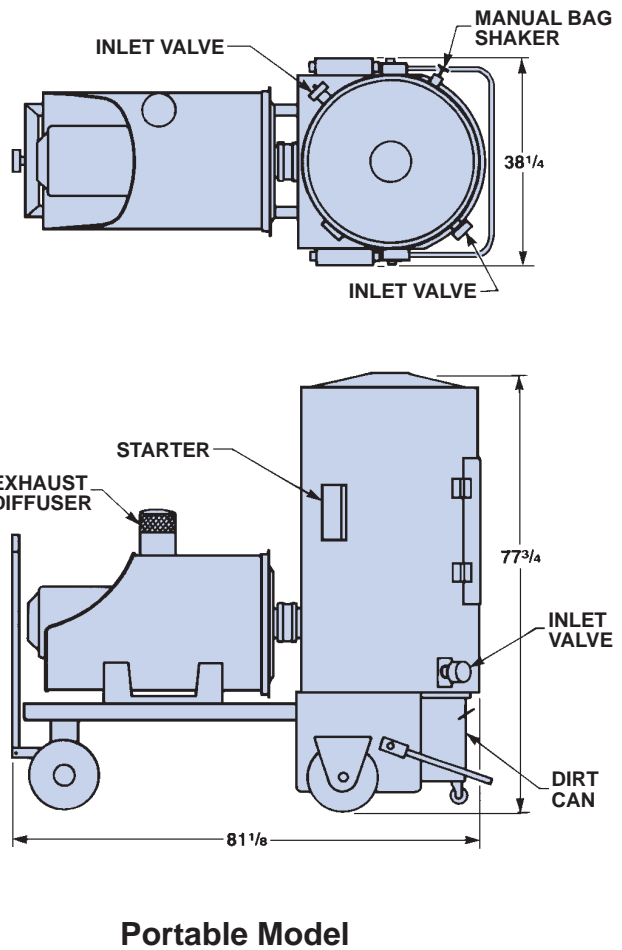
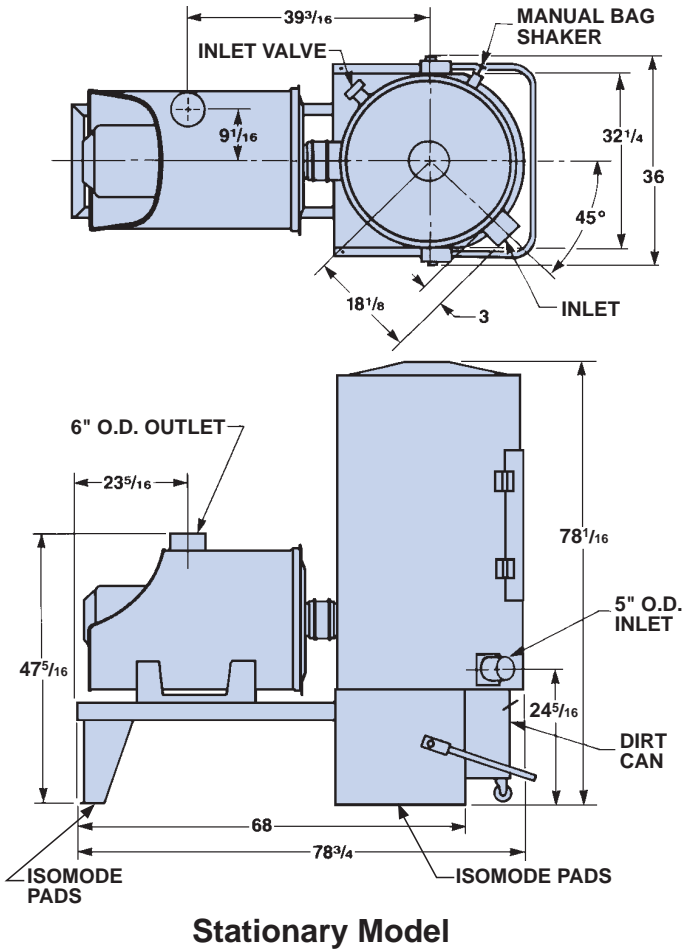
- Casing, separator, base, dirt can: ASTM A569 hot-rolled steel
- Impellers: 5052-H34 aluminum
- Shaft: AISI-1045 hot-rolled bar steel
- Finish: epoxy primer with Spencer blue urethane topcoat

Industravac®

Series B

<input type="checkbox"/> Certified	<input type="checkbox"/> Preliminary
Installation _____	
Customer _____	
Customer Order No. _____	
Spencer Machine No. _____	
Catalog No. _____	
By _____	Date _____

Dimensions All dimensions are in inches



Performance Data

Volume (SCFM) _____
 Vacuum (In. Hg) _____
 Discharge Pressure (PSIA) _____
 Inlet Temperature (°F) _____

Motor Data

HP _____ RPM _____
 Voltage _____
 Phase _____ Hz _____
 Enclosure _____

Separator Filter Data

Area: 75 sq. ft.
 Bag Quantity: 19
 Bag Catalog No.: 5445-N
 Bag Material: _____



Since 1892 moving air and gas for a cleaner environment
The Spencer Turbine Company, 600 Day Hill Road, Windsor, CT 06095-4706

TEL 800-232-4321 ♦ 860-688-8361 ♦ FAX 860-688-0098 ♦ www.spencerturbine.com